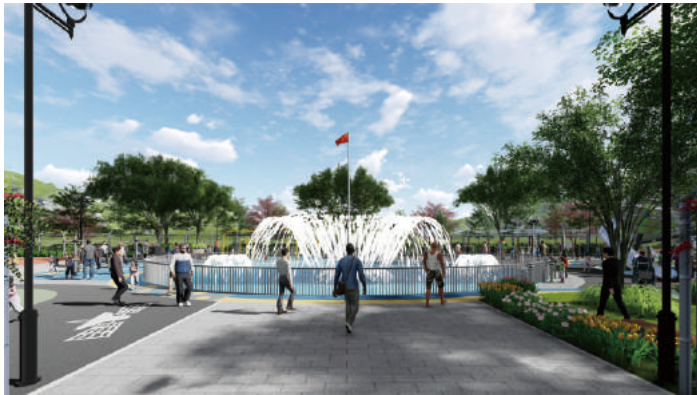




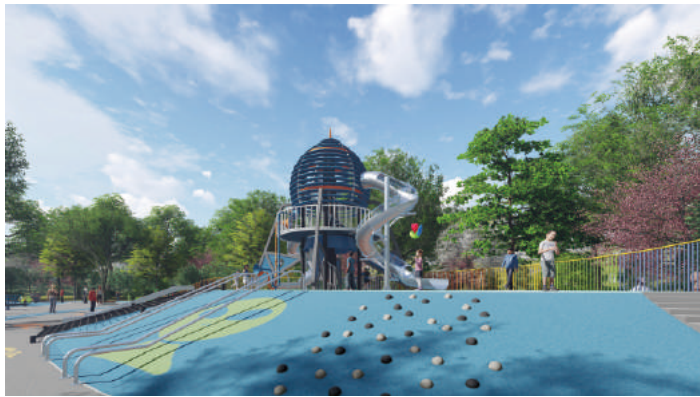
మనీ 16 స్కూ

Customise Design
Expand the portfolio





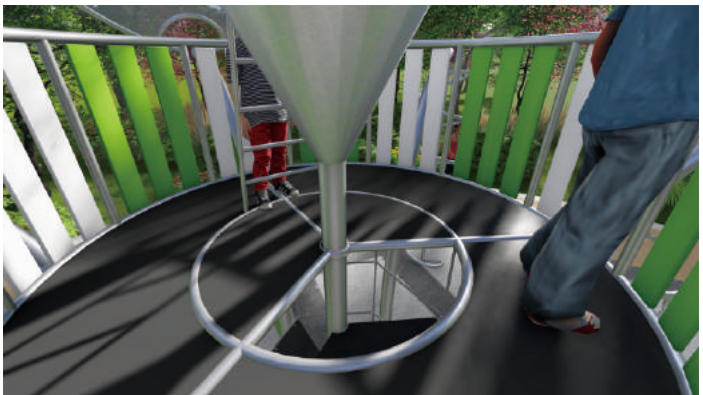
PS - JQ0901 (Alien transit stations)



PS - JQ1101 (Alien research base)



PS - JQ1301 (The rolling, Sheet jelly)

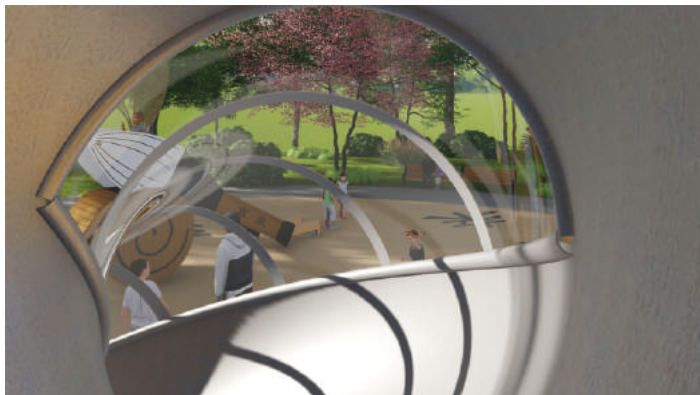
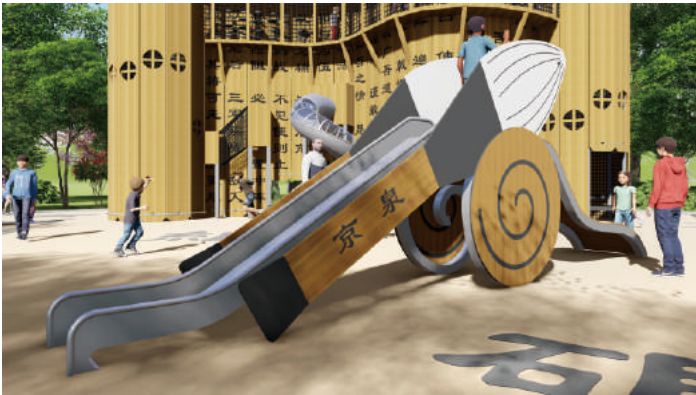


PS - JQ1401 (Attack badminton)



PS - JQ1501 (Flavor of the ancient town)

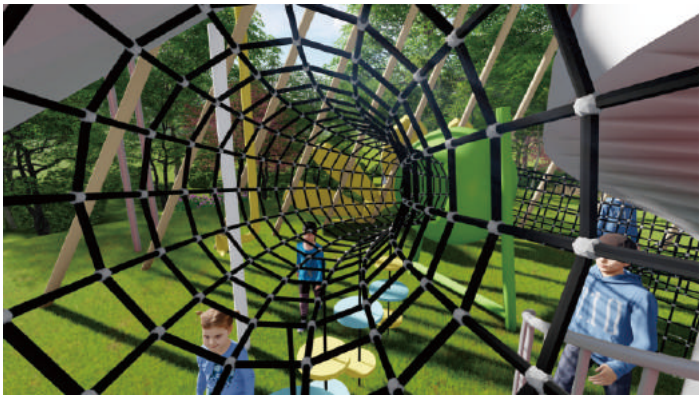
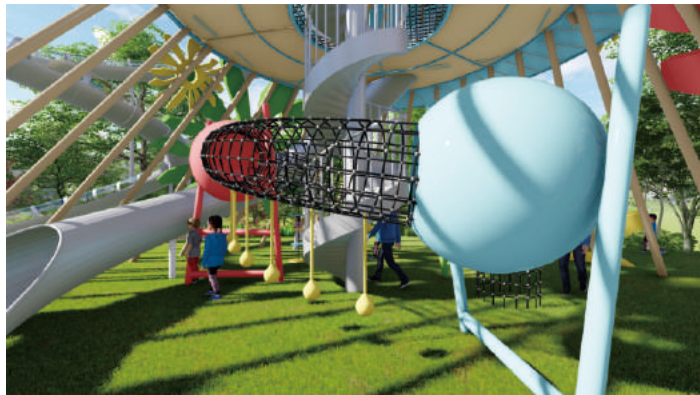
PS - JQ1601 (Rural town)



PS - JQ1701 (Pictorial guide of ancient books)



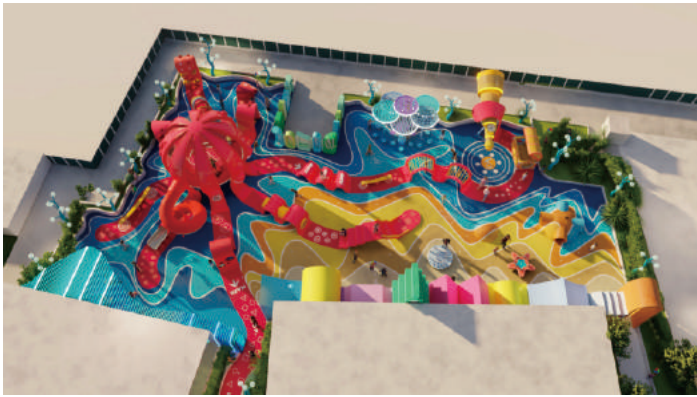
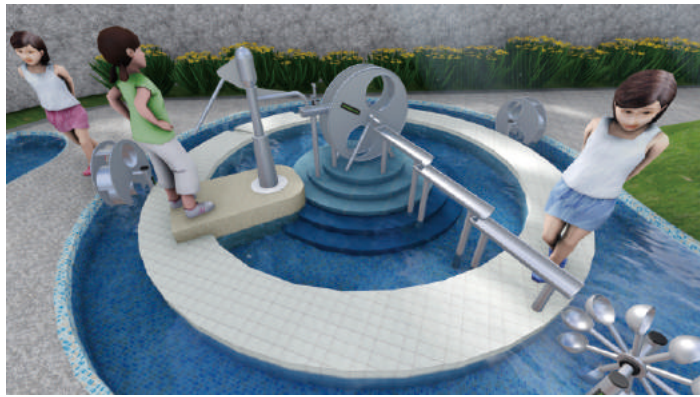
PS - JQ1801 (Animal Welfare Society)



PS - JQ1901 (Minas Flower Tower)



PS - JQ2001 (Rooftop power station)



PS - JQ2101 (Mead Water Park)

PS - JQ2201 (The deep-sea octopus)



PS - JQ2301 (Lighthouse of dawn)



PS - JQ2401 (Flying saucers)



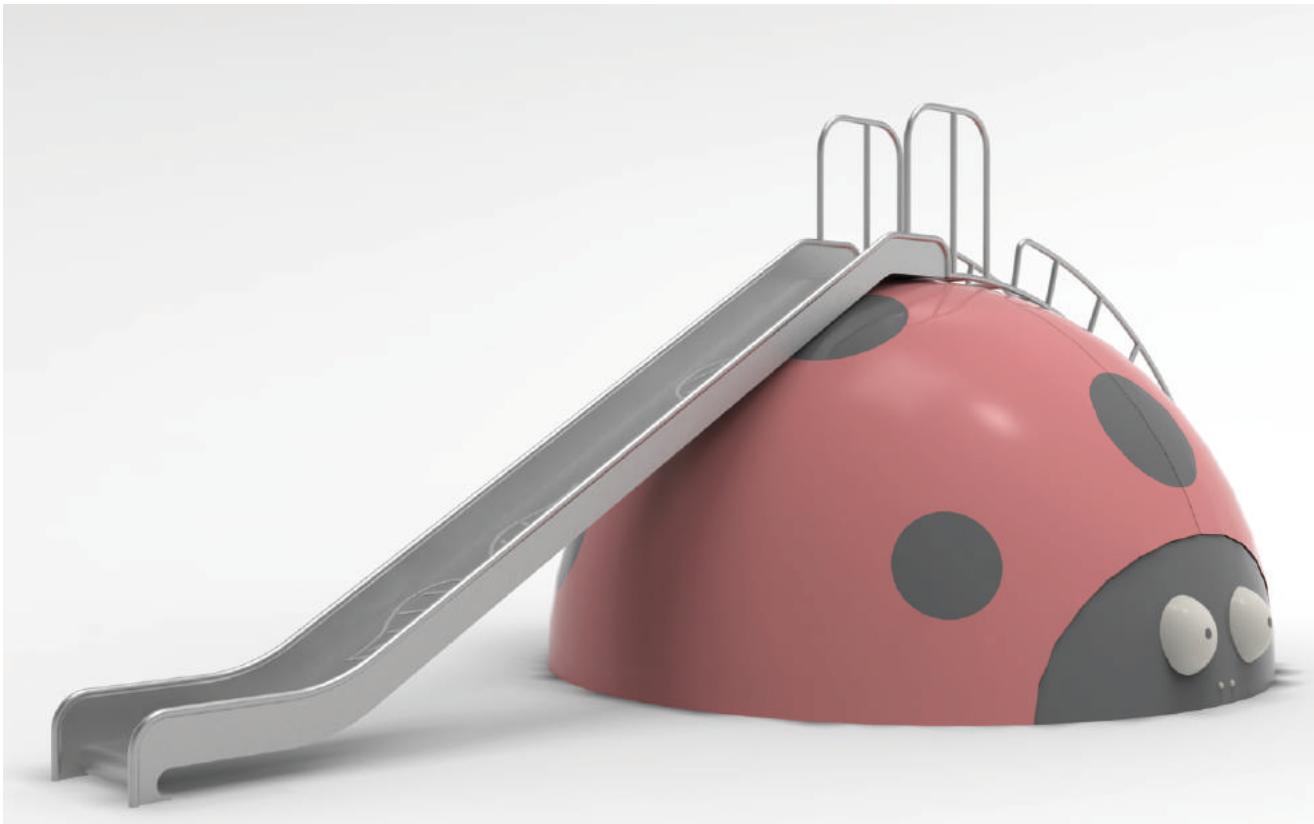
PS - JQ2302 (Warrior tribe)



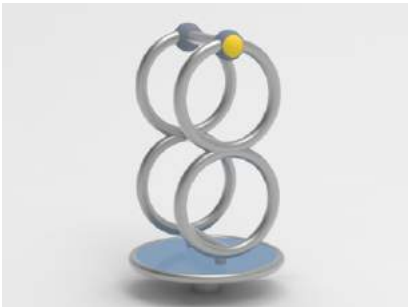
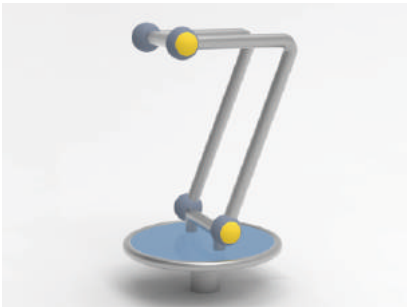
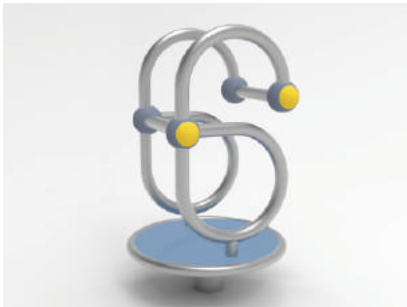
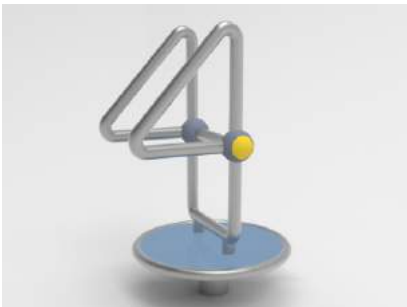
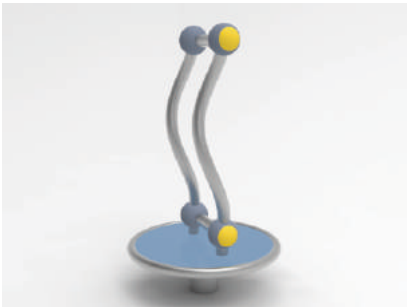
PS - JQ2402 (Twin onion)



PS - JQ2501 (Anti-aircraft guns)



PS - JQ2502 (Lady beetle)



Follow one's inclinations, free collocation

PS - JQ2601 (Digital turntable combination)

EXPAND THE PORTFOLIO



PS - JQ2701
Size:420×130×230cm



PS - JQ2702
Size:460×240×270cm



PS - JQ2801
Size:540×350×230cm



PS - JQ2802
Size:590×450×320cm



PS - JQ2703
Size:360×460×270cm



PS - JQ2704
Size:620×330×350cm



PS - JQ2803
Size:420×460×310cm



PS - JQ2804
Size:530×250×320cm



PS - JQ2705
Size:600×430×340cm



PS - JQ2706
Size:570×240×320cm



PS - JQ2805
Size:550×460×360cm



PS - JQ2806
Size:670×440×320cm



PS - JQ2901
Size:760×300×370cm



PS - JQ2902
Size:540×320×350cm

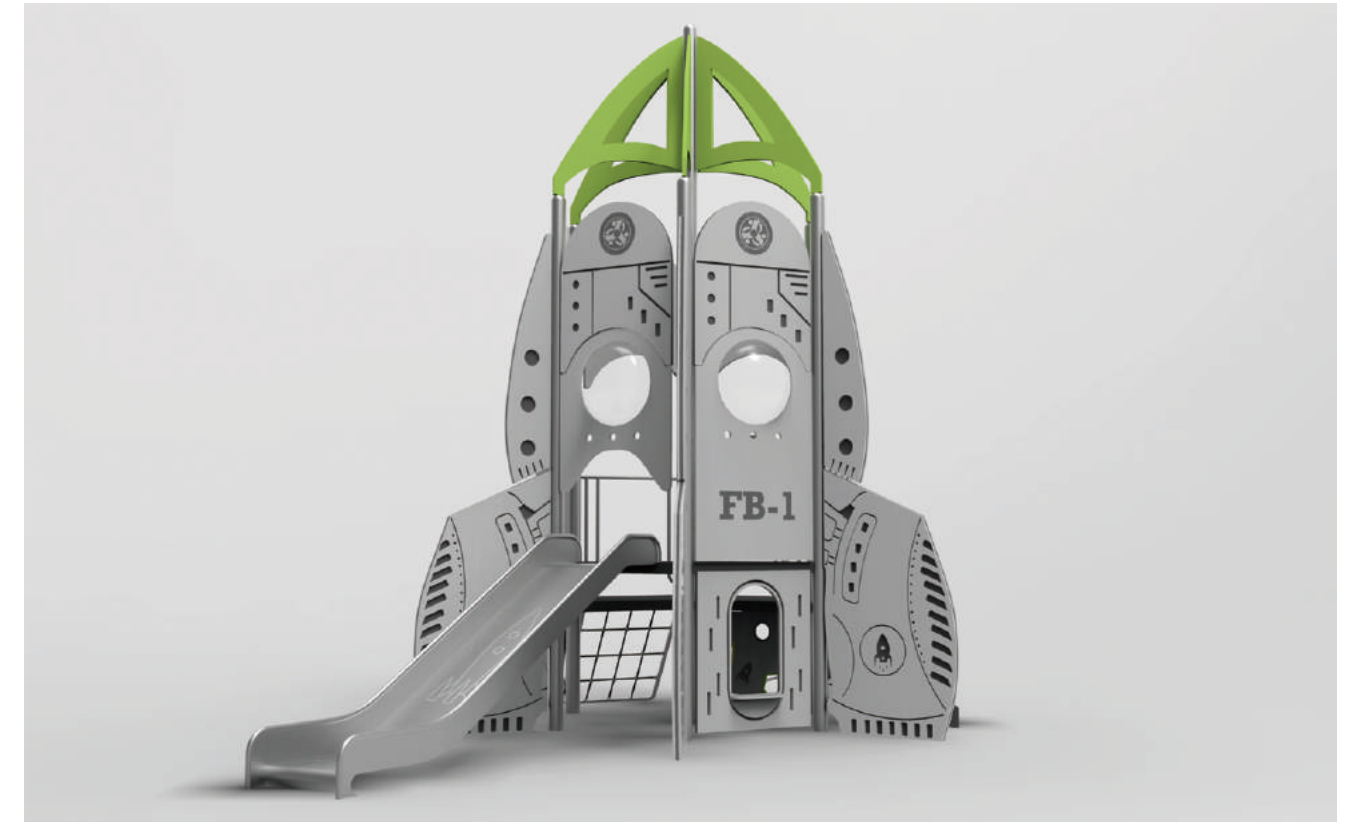


PS - JQ2903
Size:610×290×350cm



PS - JQ2904
Size:775×310×270cm

Play and learning are vital, providing some good play opportunities and environment is the most direct way,It can enable them to achieve the basic purpose of play and learning in the first stage of life. Through games, children don't It can only build physical strength, develop motor skills, increase balance and coordination, and also during social activities you can learn to communicate, stimulate your potential, and improve your cognitive and language skills.



PS - JQ3001 Size:610×450×550cm



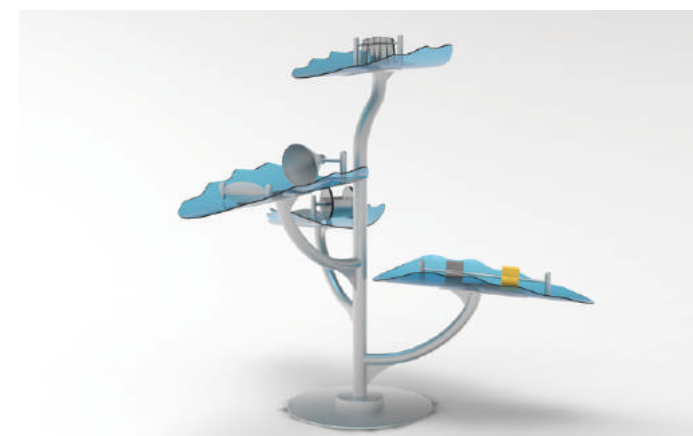
PS - JQ3002 Size:595×115×265cm



PS - JQ3101 (Splashing combination)



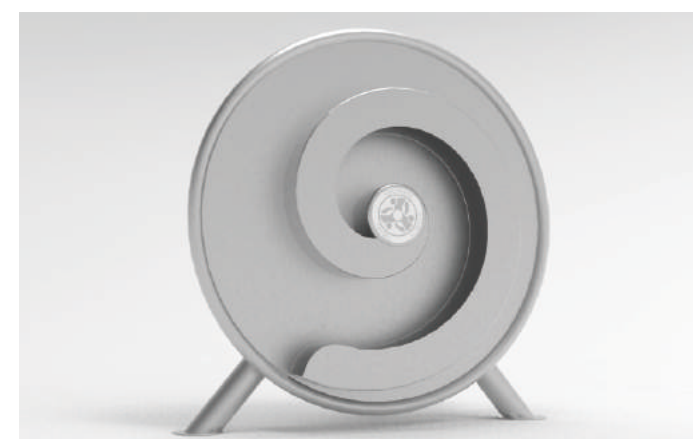
PS - JQ3102 (Surfboard fetches water)



PS - JQ3201
Cranes paddle



PS - JQ3202
The Archimedes compass



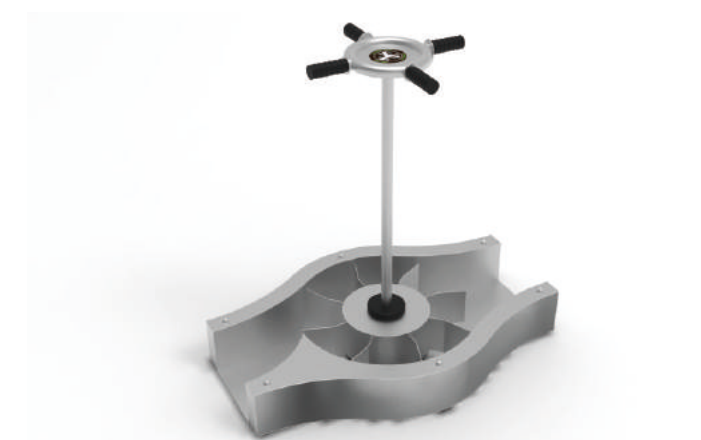
PS - JQ3203
Compass Waterwheel (Positive)



PS - JQ3204
Compass Waterwheel (Positive)



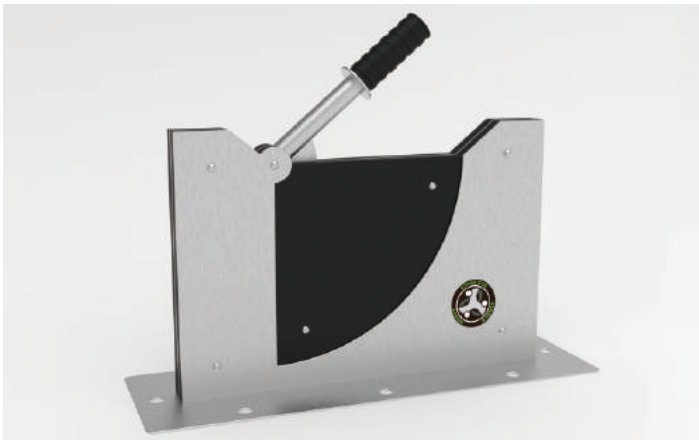
PS - JQ3205
Archimedes screw



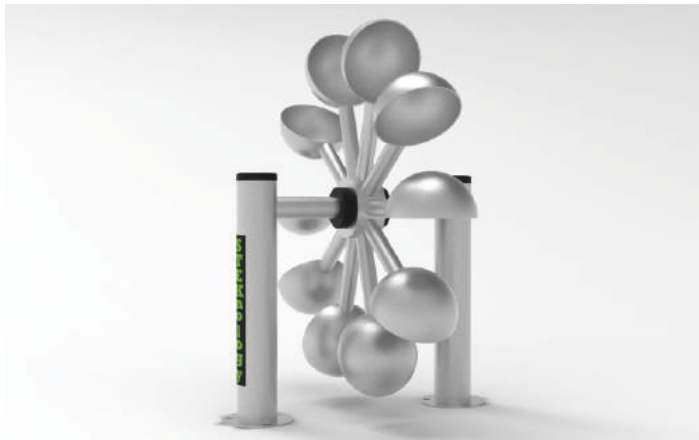
PS - JQ3206
Spin the water cart



PS - JQ3301
Handled lift lock



PS - JQ3302
The fan gate



PS - JQ3401
The spoon waterwheel



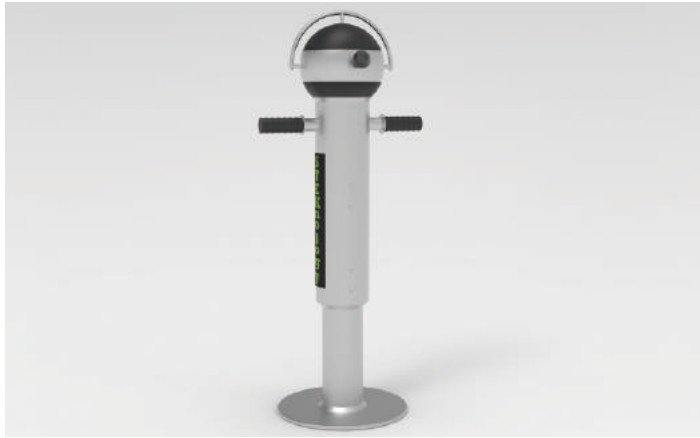
PS - JQ3402
Drum water pressure



PS - JQ3303
Open lift locks



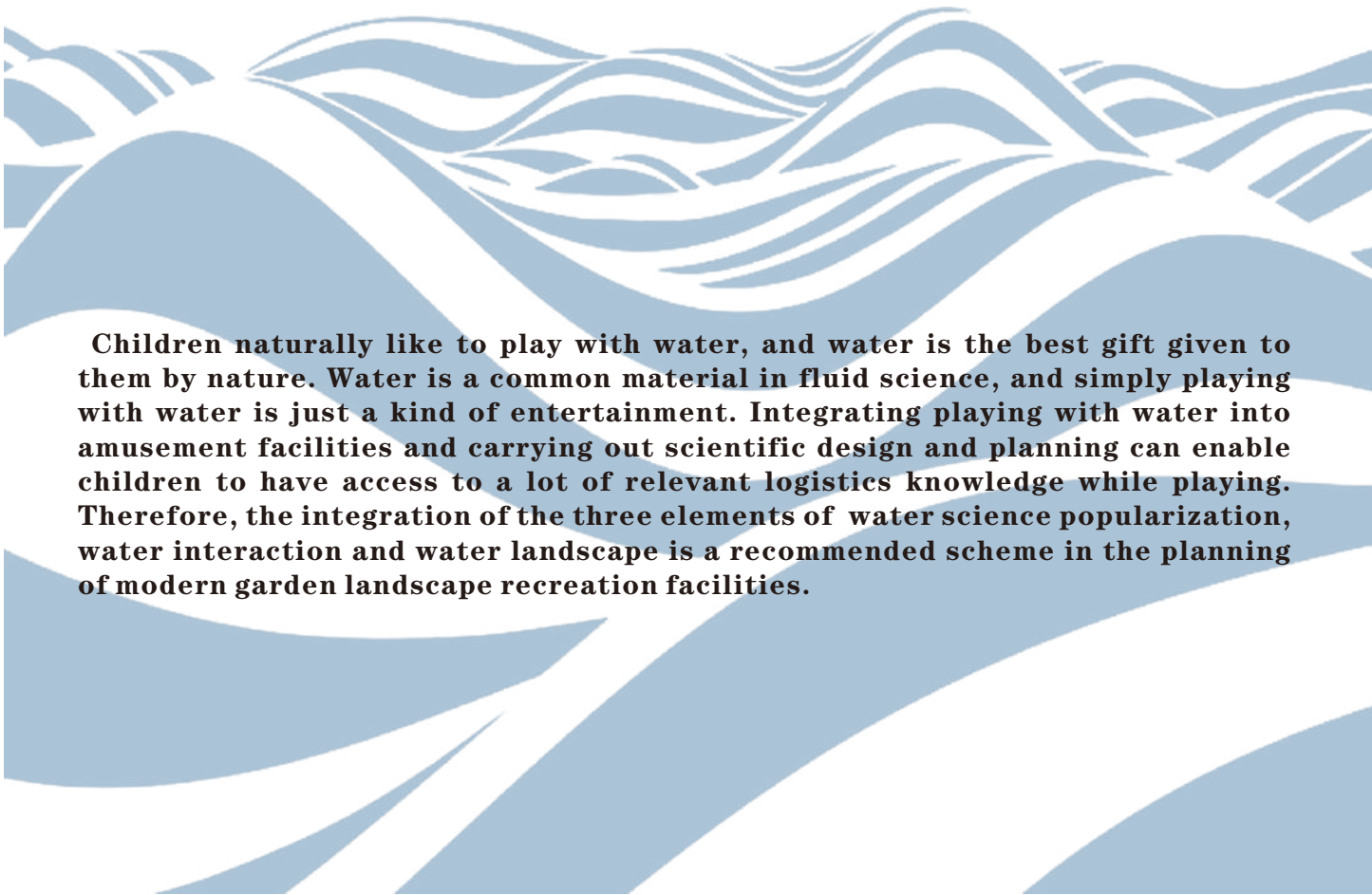
PS - JQ3304
Spin locks



PS - JQ3305
Ball water pressure



PS - JQ3306
Water machine



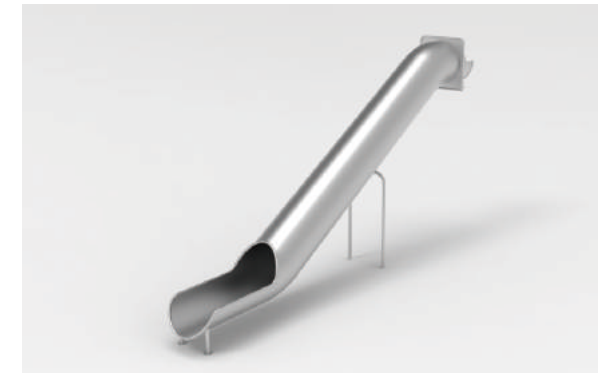
Children naturally like to play with water, and water is the best gift given to them by nature. Water is a common material in fluid science, and simply playing with water is just a kind of entertainment. Integrating playing with water into amusement facilities and carrying out scientific design and planning can enable children to have access to a lot of relevant logistics knowledge while playing. Therefore, the integration of the three elements of water science popularization, water interaction and water landscape is a recommended scheme in the planning of modern garden landscape recreation facilities.



PS - JQ3501 (Two big slides)



PS - JQ3502 (big slides)



PS - JQ3601 (tube slide)



PS - JQ3602 (transparent tube slide)



PS - JQ3603 (semicircle tube slide)



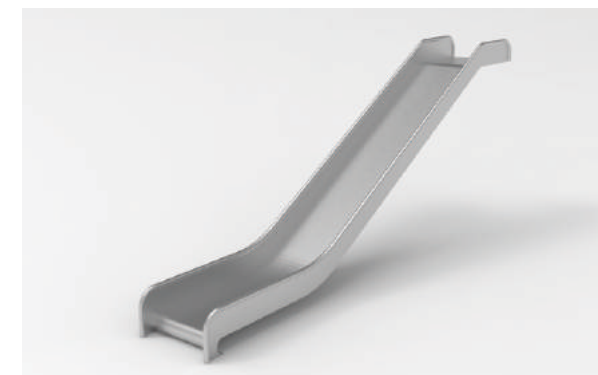
PS - JQ3604 1.2m (1.2m straight slide)



PS - JQ3503 (Spira-U-Slide)



PS - JQ3504 (S Tube Slide)



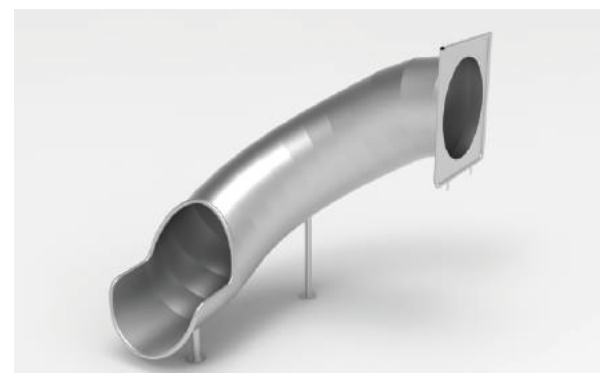
PS - JQ3605 1.5m (1.5m straight slide)



PS - JQ3606 (tunnel)



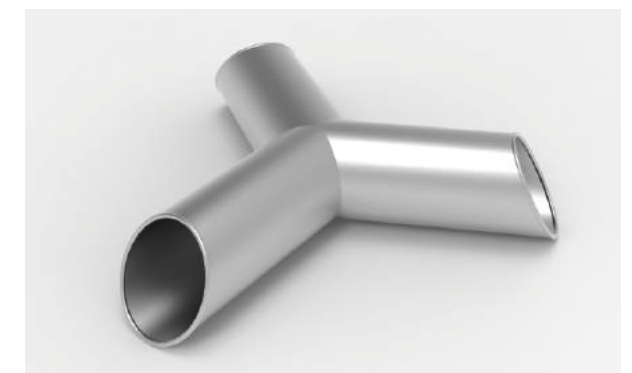
PS - JQ3505 (Curred-U-Slide)



PS - JQ3506 (C Tube Slide)



PS - JQ3607 (curve tunnel)



PS - JQ3608 (Y-tunnel)